

Appendix B

Correctional Statistics for Asia and the Pacific 2011

Correctional Statistics for Asia and the Pacific 2011

Table 1: Prisoners by Gender and Imprisonment Rates, mid 2011

Country/Area	Male	Female	Total Population('000)	General 000 population)	Imprisonment rate (per 100 000 population)	% of foreign nationals/non- locals
Australia (Northern Territory)	1 207	58	1 265	226	560	5.0
Australia (Western Australia)	4 296	352	4 648	2 318	200.5	10.0
Brunei Darussalam	386	41	427	406	105.2	32.3
Cambodia	14 224	993	15 217	14 090	108.0	3.9
Canada	13 651	570	14 221 ¹	34 483	41.2	6.0
Fiji	1 198	40	1 238	870	142.3	5.9
Hong Kong (China)	7 914	1 784	9 698	7 098	136.6	27.0
India (Rajasthan)	17 841	669	18 510	68 620	30.0	0.5
India (Tamil Nadu)	13 000	1 000	14 000	70 000	20.0	---
Indonesia	130 552	6 825	137 377	234 200 ²	58.7	0.4
Japan	66 096	5 324	71 420	128 019	55.8	6.5
Kiribati	124	9	133	103	129.0	0.0
Korea	44 000	2 503	46 503	48 989	94.9	2.8
Macao (China)	801	142	943	558	169.0	58.5
Malaysia	36 089	2 662	38 751	28 300	136.9	30.3
Mongolia	7 357	479	7 836	2 755	284.4	0.3
New Zealand	8 157	551	8 708	4 400	198.0	2.5
Philippine	34 039	2 105	36 144	88 570 ³	40.8	0.5
Singapore	11 981	1 240	13 221	5 077	260.4	13.2
Solomon Island	279	0	279	516	54.1	0.4
Sri Lanka	23 503	1 238	24 741	20 653	119.8	0.5
Thailand	196 415	33 241	229 656	69 519	330.3	4.0
Tonga	149	5	154	102	151.0	1.3
Vanuatu	220	4	224	243	92.2	0.4
Vietnam	100 752	12 266	113 018	86 216	131.1	0.3

¹ refers to the federal prison population

² for 2010

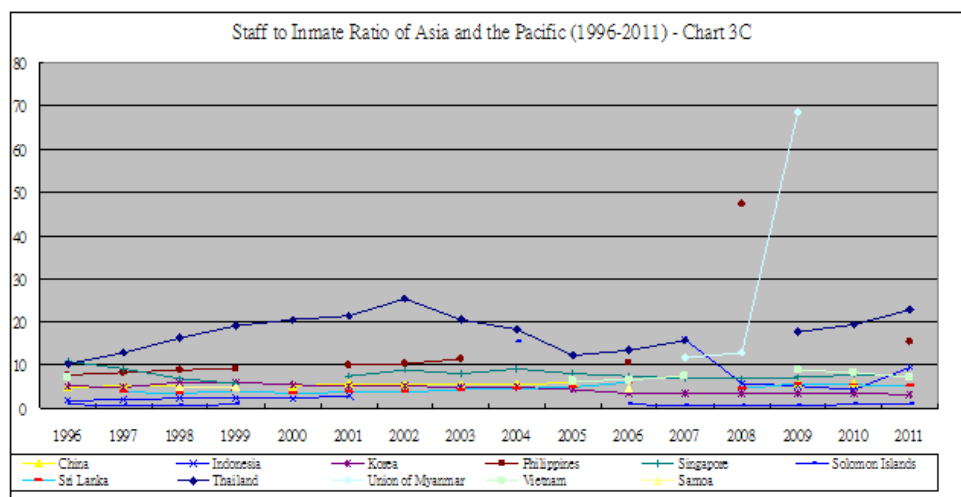
³ for 2007

Correctional Statistics for Asia and Pacific 2011

Staff VS Inmate Ratio (1996-2011)

	1996	1997	1998	1999	2000	2001	2002	2003	2004	2005	2006	2007	2008	2009	2010	2011
China	4.7	5.0	5.1		5.0	5.7	5.3	5.4	5.5	5.9				5.8	5.7	
Indonesia	1.8	2.0	2.3	2.4	2.2	2.8		4.5				15.9	5.7	5.1	4.2	9.4
Korea	5.1	4.7	6.0	5.9	5.3	5.1	5.0	4.8	4.7	4.2	3.4	3.4	3.4	3.5	3.3	3.1
Philippines	7.7	8.2	8.8	9.0		10.0	10.3	11.3			10.6		47.4			15.3
Singapore	10.7	9.0	6.7	5.7		7.5	8.8	7.9	9.2	8.0	7.5	6.7	6.9	7.2	7.6	7.5
Solomon Islands	0.8	0.7	0.6	0.8					15.3		0.9	0.7	0.6	0.7	0.8	0.8
Sri Lanka		3.6	3.3	4.0	3.3	3.8	3.7	4.3	4.6	4.8	6.0		4.6	5.6	5.3	5.1
Thailand	10.2	12.7	16.2	19.2	20.4	21.4	25.4	20.5	18.3	12.3	13.3	15.6		17.6	19.3	22.7
Union of Myanmar												11.7	12.7	68.7		
Vietnam	7.2									6.2	6.5	7.4		8.7	8.3	7.2
Samoa			4.9	4.9							4.6					

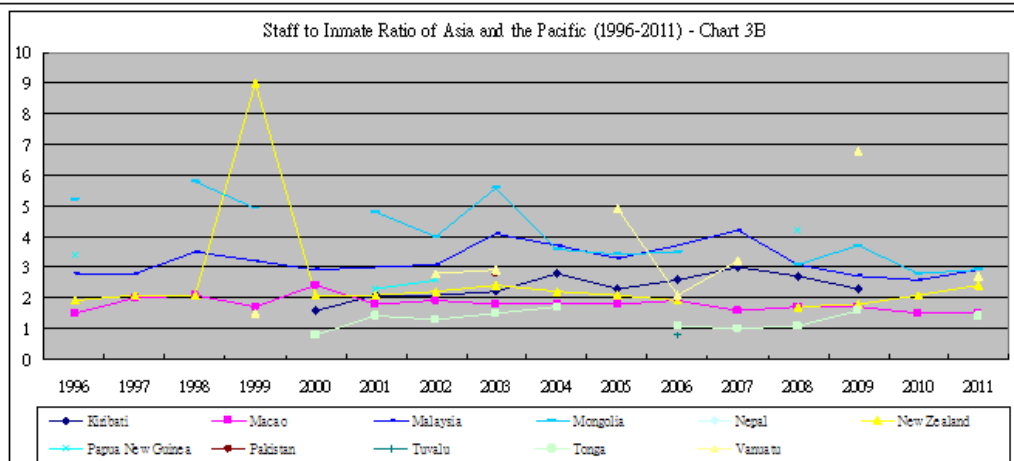
Staff to Inmate Ratio of Asia and the Pacific (1996-2011) - Chart 3C



Correctional Statistics for Asia and Pacific 2011

Staff VS Inmate Ratio (1996-2011)

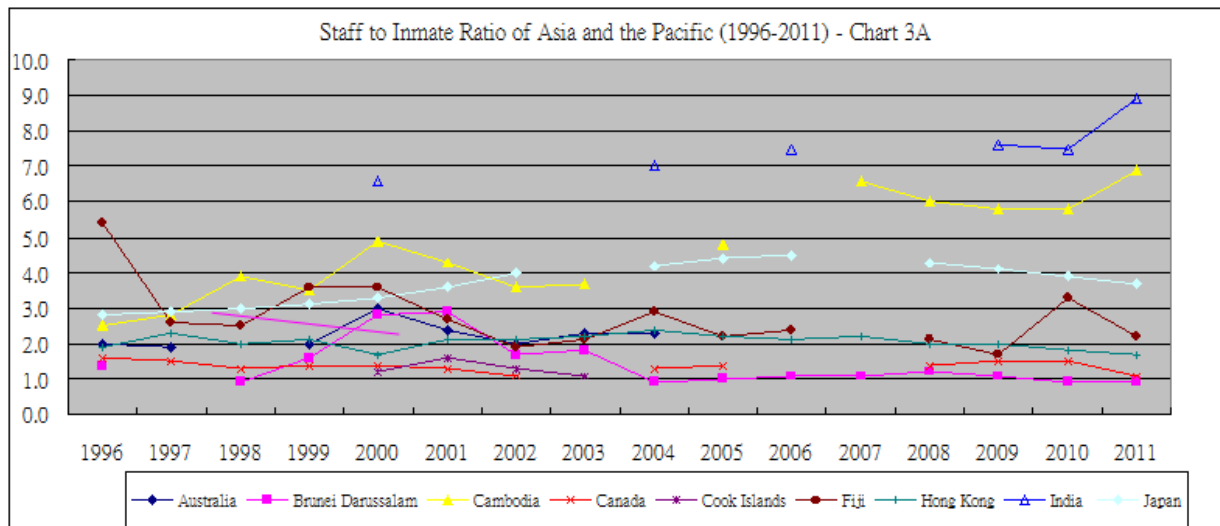
	1996	1997	1998	1999	2000	2001	2002	2003	2004	2005	2006	2007	2008	2009	2010	2011
Kiribati					1.6	2.1	2.1	2.2	2.8	2.3	2.6	3.0	2.7	2.3		
Macao	1.5	2.0	2.1	1.7	2.4	1.8	1.9	1.8	1.8	1.8	1.9	1.6	1.7	1.7	1.5	1.5
Malaysia	2.8	2.8	3.5	3.2	2.9	3.0	3.1	4.1	3.7	3.3	3.7	4.2	3.1	2.7	2.6	2.9
Mongolia	5.2		5.8	4.9		4.8	4.0	5.6	3.6	3.4	3.5		3.1	3.7	2.8	2.9
Nepal																
New Zealand	1.9	2.1	2.1	9.0	2.1	2.1	2.2	2.4	2.2	2.1	1.9		1.7	1.8	2.1	2.4
Papua New Guinea	3.4					2.3	2.6						4.2			
Pakistan								2.8								
Tuvalu											0.8					
Tonga					0.8	1.4	1.3	1.5	1.7			1.1	1.0	1.1	1.6	1.4
Vanuatu				1.5			2.8	2.9		4.9	2.1	3.2		6.8		2.7



Correctional Statistics for Asia and Pacific 2011

Staff VS Inmate Ratio (1996-2011)

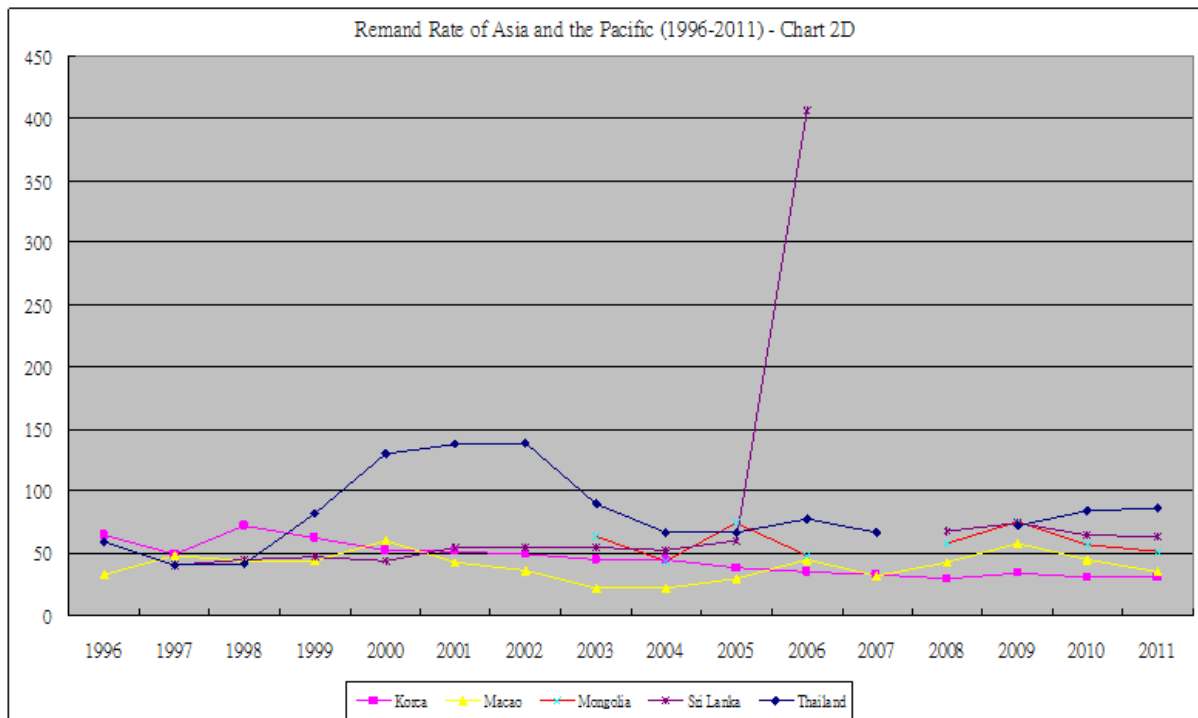
	1996	1997	1998	1999	2000	2001	2002	2003	2004	2005	2006	2007	2008	2009	2010	2011
Australia	2.0	1.9		2.0	3.0	2.4	2.0	2.3	2.3							
Brunei Darussalam	1.4		0.9	1.6	2.8	2.9	1.7	1.8	0.9	1.0	1.1	1.1	1.2	1.1	0.9	0.9
Cambodia	2.5	2.8	3.9	3.5	4.9	4.3	3.6	3.7		4.8		6.6	6	5.8	5.8	6.9
Canada	1.6	1.5	1.3	1.4	1.4	1.3	1.1		1.3	1.4			1.4	1.5	1.5	1.1
Cook Islands					1.2	1.6	1.3	1.1								
Fiji	5.4	2.6	2.5	3.6	3.6	2.7	1.9	2.1	2.9	2.2	2.4		2.1	1.7	3.3	2.2
Hong Kong	1.9	2.3	2.0	2.1	1.7	2.1	2.1	2.2	2.4	2.2	2.1	2.2	2	2	1.8	1.7
India					6.6				7.0		7.5			7.6	7.5	8.9
Japan	2.8	2.9	3.0	3.1	3.3	3.6	4.0		4.2	4.4	4.5		4.3	4.1	3.9	3.7



Correctional Statistics for Asia and Pacific 2011

Trend of Remand Rate (1996-2011)

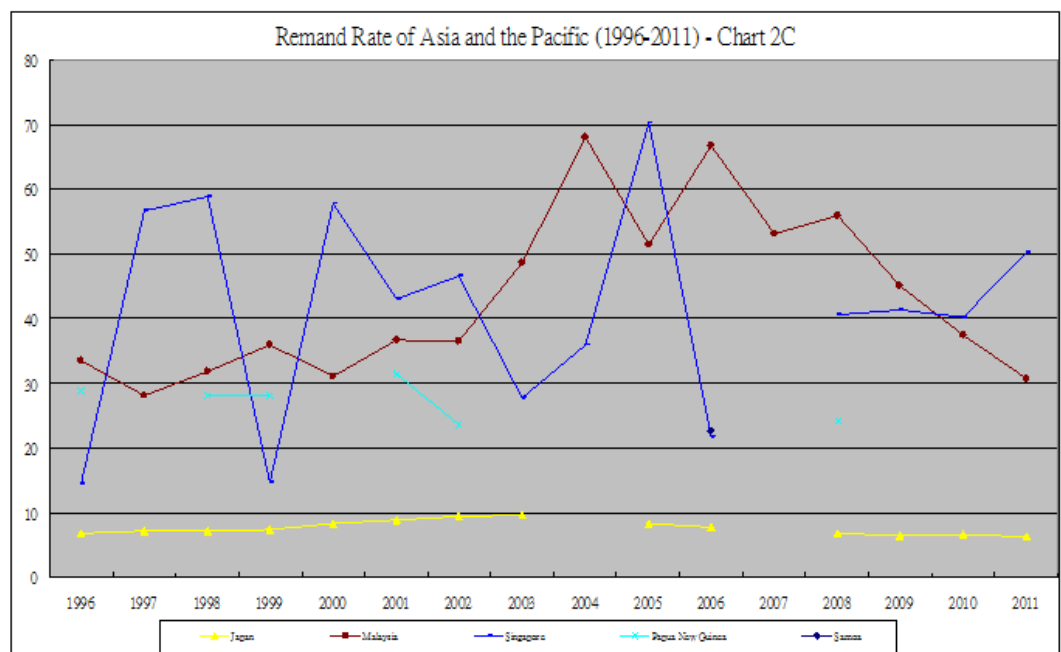
Country	1996	1997	1998	1999	2000	2001	2002	2003	2004	2005	2006	2007	2008	2009	2010	2011
Korea	64.7	49.1	71.6	62.8	52.5	51.2	48.7	45.3	45.0	38.0	34.6	32.8	29.9	34.1	31.1	30.8
Macao	32.8	48.4	43.6	43.2	59.9	42.3	36.2	21.6	21.6	29.7	44.7	31.2	42.9	57.5	44.6	35.3
Mongolia								63.7	43.6	74.1	48.4		57.7	75	56.5	51.8
Sri Lanka		40.8	44.9	47.5	43.3	54.3	54.7	54.2	51.9	59.8	406.7		68.2	74.5	64.3	63.2
Thailand	59.0	40.8	41.8	82.2	129.9	137.9	138.8	89.7	66.1	66.5	77.8	67.0		72	83.9	86.1



Correctional Statistics for Asia and Pacific 2011

Trend of Remand Rate (1996-2011)

Country	1996	1997	1998	1999	2000	2001	2002	2003	2004	2005	2006	2007	2008	2009	2010	2011
Japan	6.8	7.1	7.1	7.3	8.3	8.7	9.3	9.5		8.3	7.6		6.8	6.4	6.5	6.2
Malaysia	33.5	28.1	31.8	35.9	31.0	36.7	36.5	48.6	68.0	51.4	66.8	53.1	55.8	45.1	37.4	30.7
Singapore	14.3	56.7	58.9	14.6	57.8	43.0	46.5	27.7	35.8	70.3	21.7		40.6	41.3	40.2	50.3
Papua New Guinea	28.8		28.1	28.1		31.4	23.6									
Samoa											22.6					

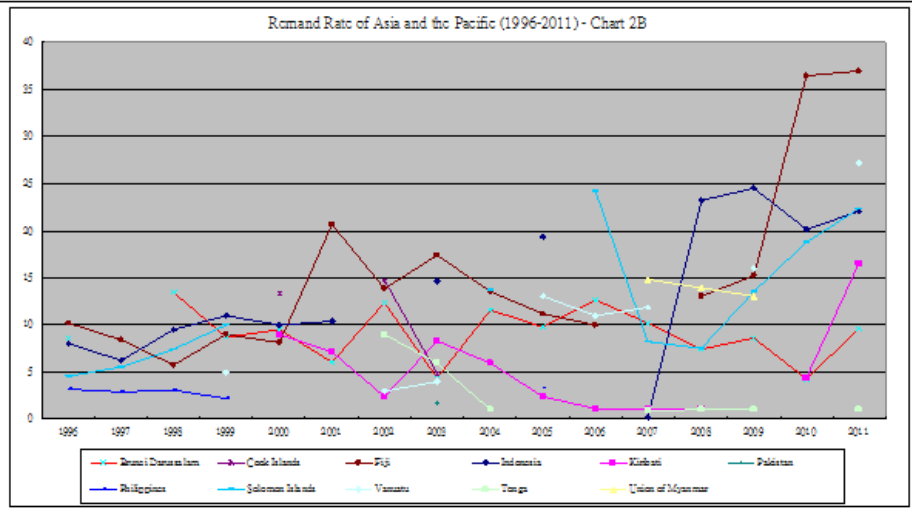




Correctional Statistics for Asia and Pacific 2011

Trend of Remand Rate (1996-2011)

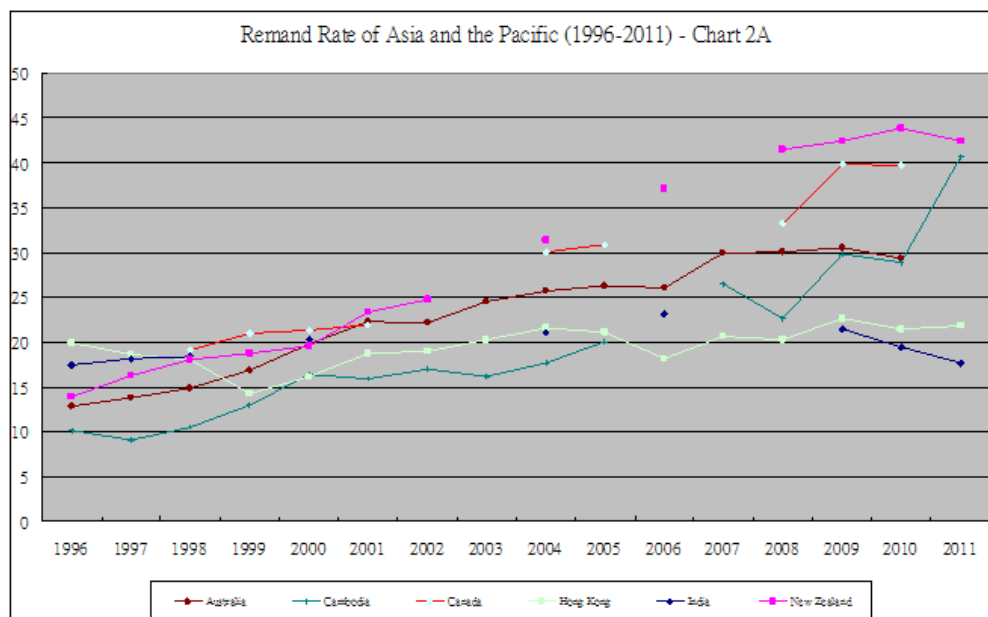
Country	1996	1997	1998	1999	2000	2001	2002	2003	2004	2005	2006	2007	2008	2009	2010	2011
Brunei Darussalam	8.6		13.4	8.7	9.5	6.0	12.3	4.3	11.6	9.8	12.6	10.2	7.4	8.6	4.2	9.6
Cook Islands					13.3		14.7	4.8								
Fiji	10.2	8.4	5.7	9.0	8.1	20.6	13.8	17.4	13.5	11.2	10.0		13	15.2	36.4	36.9
Indonesia	8.0	6.2	9.5	11.0	10.0	10.4		14.6		19.4		0.2	23.2	24.5	20.1	22
Kiribati					9.0	7.1	2.4	8.3	5.9	2.4	1.1	1.1	1.1		4.3	16.5
Pakistan								1.7								
Philippines	3.2	2.9	3.1	2.2						3.3						
Solomon Islands	4.5	5.5	7.4	10.0					13.7		24.2	8.2	7.5	13.5	18.8	22.3
Vanuatu				4.9			3.0	4.0		13.0	11.0	11.9		16		27.2
Tonga							9.0	5.9	1.0				0.9	1	1	1
Union of Myanmar													14.8	13.9	13	



Correctional Statistics for Asia and Pacific 2011

Trend of Remand Rate (1996-2011)

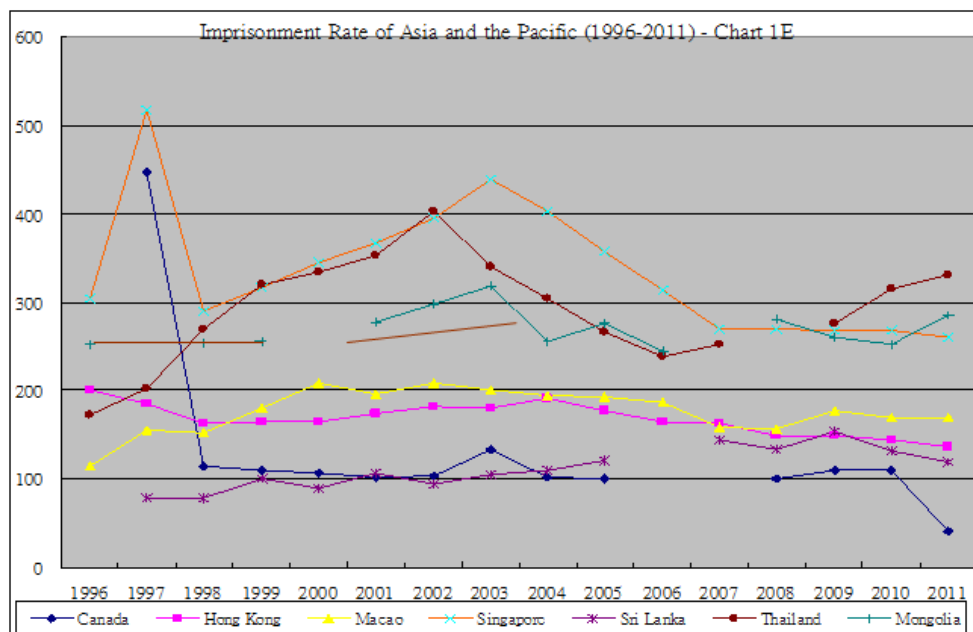
Country	1996	1997	1998	1999	2000	2001	2002	2003	2004	2005	2006	2007	2008	2009	2010	2011
Australia	12.8	13.8	14.8	16.9	19.8	22.3	22.2	24.5	25.7	26.3	26.1	29.9	30.1	30.5	29.4	
Cambodia	10.1	9.1	10.5	13.0	16.4	15.9	17.0	16.1	17.7	20.1		26.5	22.7	29.8	28.9	40.7
Canada			19.1	21.0	21.4	21.9			30.1	30.9			33.3	39.9	39.7	
Hong Kong	19.9	18.6	18.1	14.3	16.1	18.7	19.0	20.3	21.6	21.1	18.2	20.6	20.3	22.7	21.5	21.8
India	17.5	18.2	18.4		20.3				21.1		23.1			21.5	19.5	17.7
New Zealand	13.9	16.3	18.0	18.8	19.6	23.3	24.8		31.4		37.1		41.5	42.5	43.9	42.4



Correctional Statistics for Asia and Pacific 2011

Trend of Imprisonment Rate in Asia and the Pacific (1996-2011)

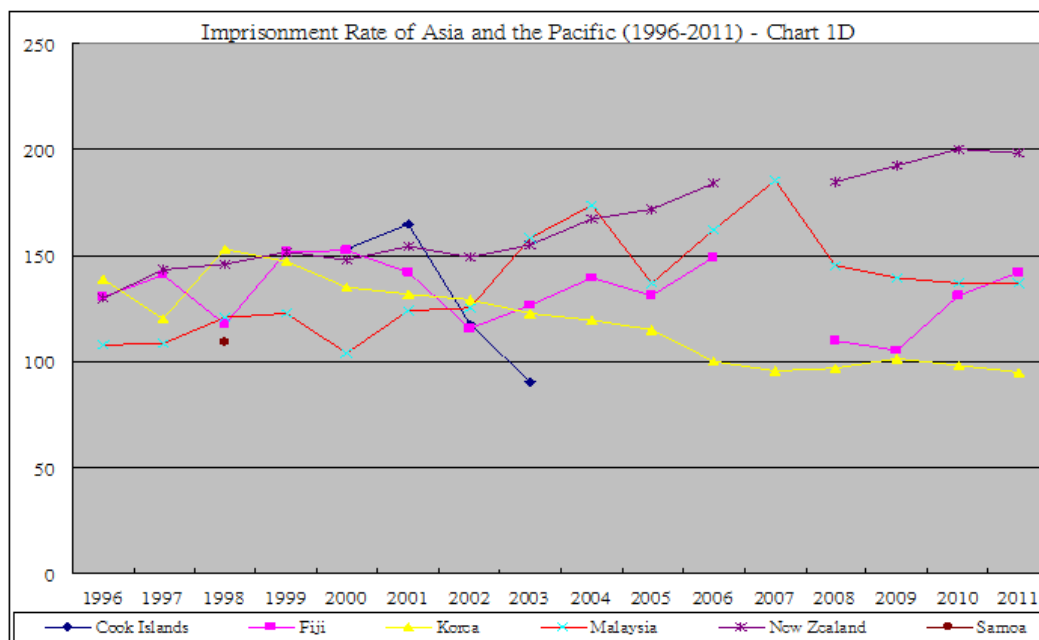
	1996	1997	1998	1999	2000	2001	2002	2003	2004	2005	2006	2007	2008	2009	2010	2011
Canada		446.0	114.9	109.0	107.0	102.5	103.2	133.5	101.1	99.5			100.7	109.1	109.4	41.2
Hong Kong	201.1	184.4	163.2	164.0	164.0	173.8	181.2	180.1	191.3	176.5	163.8	162.5	148.5	149.3	144.3	136.6
Macao	114.3	154.7	152.0	180.0	207.7	195.7	208.3	200.7	194.4	192.1	186.8	158.2	156.3	176.6	169.7	169
Singapore	304.2	517.3	289.8	317.0	344.8	366.0	394.8	438.4	402.3	356.7	312.8	269.1	269.1	267.5	268.2	260.4
Sri Lanka		77.8	78.4	100.0	88.7	106.0	93.3	105.1	108.9	121.3		144.5	132.4	153	131	119.8
Thailand	173.1	201.6	270.0	320.0	334.1	351.8	402.6	340.5	304.3	265.8	238.4	253.0		275.6	315.3	330.3
Mongolia	252.9		253.5	256.0		277.3	297.1	318.0	255.6	275.0	244.2		280.4	260.3	251.6	284.4



Correctional Statistics for Asia and Pacific 2011

Trend of Imprisonment Rate in Asia and the Pacific (1996-2011)

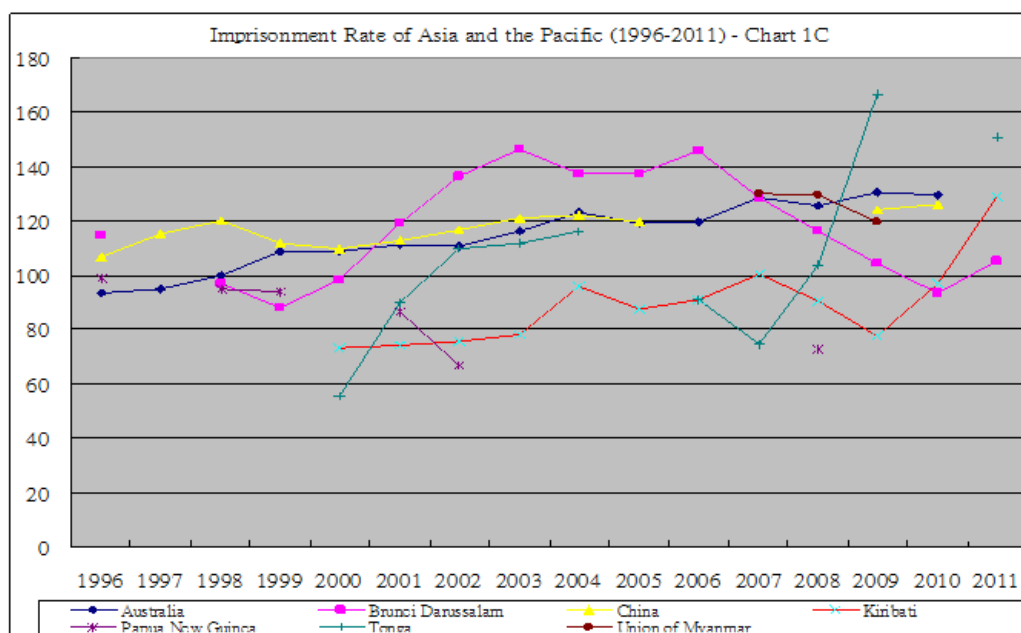
	1996	1997	1998	1999	2000	2001	2002	2003	2004	2005	2006	2007	2008	2009	2010	2011
Cook Islands					153.3	165	117.6	90.4								
Fiji	130.4	141.1	117.5	152.0	152.5	142.2	115.7	126.7	139.7	130.9	149.5		109.8	105.1	131.1	142.3
Korea	138.7	120.3	152.9	147.0	135.3	131.5	128.9	122.5	119.4	114.8	100.2	95.9	96.9	101.3	97.9	94.9
Malaysia	108.2	108.4	120.5	123.0	104.0	124.1	125.2	158.5	173.7	137.1	162.4	185.1	145.2	139.8	137.1	136.9
New Zealand	129.6	143.1	146.3	152.0	148.1	154.7	149.3	155.3	167.5	171.6	183.8		184.7	192.5	200.3	198
Samoa			109.3													



Correctional Statistics for Asia and Pacific 2011

Trend of Imprisonment Rate in Asia and the Pacific (1996-2011)

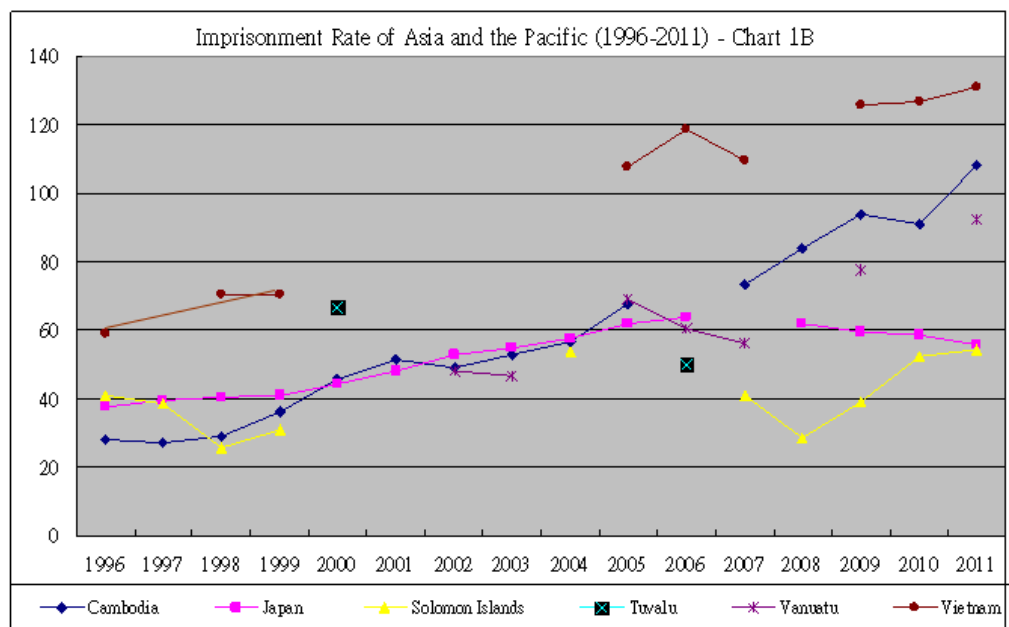
	1996	1997	1998	1999	2000	2001	2002	2003	2004	2005	2006	2007	2008	2009	2010	2011
Australia	93.4	95.1	99.9	108.8	108.9	111.2	111	116.1	123.1	119.4	119.7	128.4	125.6	130.4	129.4	
Brunei Darussalam	114.6		96.9	88.0	98.4	119.3	136.7	146.2	137.6	137.5	145.9	128.8	116.2	104.1	93.3	105.2
China	106.7	115.2	120.0	112.0	109.8	112.8	116.7	121.3	122.3	119.7				123.9	126.2	
Kiribati					73.1	74.1	75.7	78.1	95.9	87.6	90.8	100.5	90.3	77.8	96.8	129
Papua New Guinea	99.1		94.8	94.0		86.7	67.0						72.6			
Tonga					55.3	90.2	110.0	111.9	116.0		91.1	74.8	103.9	166.7		151
Union of Myanmar												129.9	129.6	119.9		



Correctional Statistics for Asia and Pacific 2011

Trend of Imprisonment Rate in Asia and the Pacific (1996-2011)

	1996	1997	1998	1999	2000	2001	2002	2003	2004	2005	2006	2007	2008	2009	2010	2011	
Cambodia	28.3	27.2	29.1	36.0	45.9	51.5	49.0	52.9	56.5	67.4		73.3	83.7	93.6	90.9	108	
Japan	37.7	39.6	40.3	41.0	44.3	48.3	52.8	54.6	57.8	61.9	63.6		61.8	59.7	58.4	55.8	
Solomon Islands	40.9	38.7	25.5	31.0					54.0			40.9	28.8	39	52.5	54.1	
Tuvalu					66.7							50.0					
Vanuatu							48.0	46.5		69.0	60.5	56.2		77.6		92.2	
Vietnam	58.9		70.5	70.5						107.7	118.6	109.5		125.5	126.5	131.1	

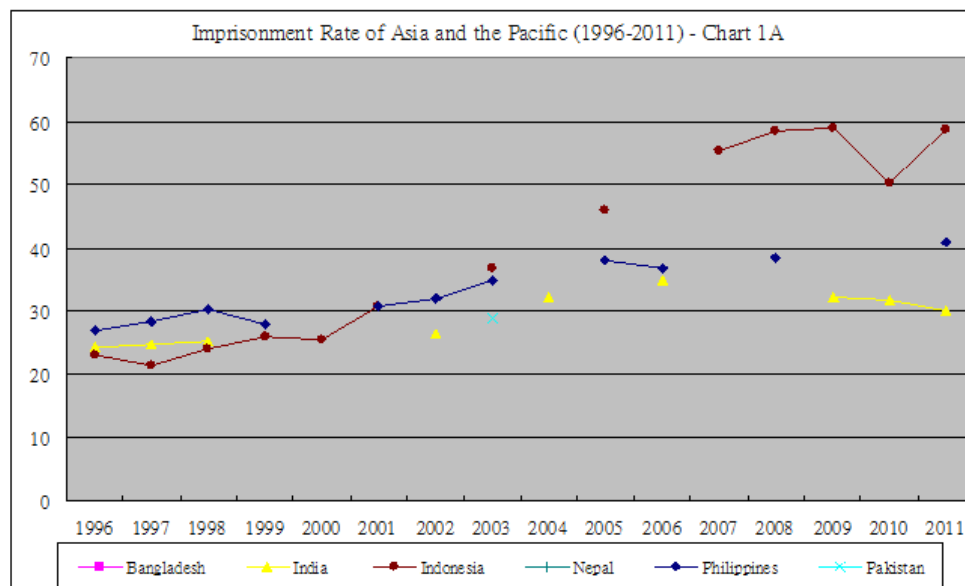




Correctional Statistics for Asia and Pacific 2011

Trend of Imprisonment Rate in Asia and the Pacific (1996-2011)

	1996	1997	1998	1999	2000	2001	2002	2003	2004	2005	2006	2007	2008	2009	2010	2011
Bangladesh																
India	24.3	24.8	25.2				26.5		32.2		34.9			32.3	31.7	30
Indonesia	23.1	21.3	24.0	26.0	25.4	30.9		36.7		46.0		55.3	58.4	58.9	50.3	58.7
Nepal																
Philippines	27.0	28.5	30.3	28.0		30.9	31.9	35.0		38.1	36.7		38.6			40.8
Pakistan								28.8								



Correctional Statistics for Asia and the Pacific 2011

Table 4(b): Rate of Offenders Subject to Supervised Orders upon Release From a Custodial Sentence, mid 2011

Country/Area	Total number of offenders subject to supervised orders upon release from a custodial sentence	Rate of offenders subject to supervised order upon release from a custodial sentence (per 100000 population)
Australia (Northern Territory)	107	47.3
Australia (Western Australia)	468	20.2
Brunei Darussalam	---	---
Cambodia	---	---
Canada	8642	25.1
Fiji	45	5.2
Hong Kong (China)	2 433	34.3
India (Rajasthan)	1 731	2.5
India (Tamil Nadu)	---	---
Indonesia	34 512	14.7
Japan	5 968	4.7
Kiribati	---	---
Korea	---	---
Macao (China)	96	17.2
Malaysia	301	1.1
Mongolia	---	---
New Zealand	7224	164.2
Philippine	879	1
Singapore	647	12.7
Solomon Islands	---	---
Sri Lanka	68	0.3
Thailand	33873	48.7
Tonga	24	23.5
Vanuatu	75	30.9
Vietnam	---	---

Correctional Statistics for Asia and the Pacific 2011

Table 4(a): Rate of Offenders Receiving Community-based Supervised Sentences*, mid 2011

Country/Area	Total number of offenders receiving community-based supervised sentences	Rate of offenders receiving community-based supervised sentence (per 100000 population)
Australia (Northern Territory)	1042	461.1
Australia (Western Australia)	5 134	221.5
Brunei Darussalam	---	---
Cambodia	---	---
Canada	---	---
Fiji	---	---
Hong Kong (China)	4 370	61.6
India (Rajasthan)	---	---
India (Tamil Nadu)	---	---
Indonesia	---	---
Japan	11 763	9.2
Kiribati	---	---
Korea	---	---
Macao (China)	191	34.2
Malaysia	109	0.4
Mongolia	470	17.1
New Zealand	35937	816.8
Philippine	---	---
Singapore	18	0.4
Solomon Islands	---	---
Sri Lanka	---	---
Thailand	---	---
Tonga	---	---
Vanuatu	130	53.5
Vietnam	---	---

* refers to Community-based Supervised Sentences imposed by the courts as an alternative to imprisonment / custodial sentence.

Correctional Statistics for Asia and the Pacific 2011

Table 3(b): Custodial Staff* to Prisoner Ratio, mid 2011

Country/Area	Total institutional custodial staff	Custodial staff to prisoner ratio
Australia (Northern Territory)	419	1:3
Australia (Western Australia)	2434	1:1.9
Brunei Darussalam	424	1:1
Cambodia	2001	1:7.6
Canada	7321	1:1.9
Fiji	415	1:3
Hong Kong (China)	4 912	1:2
India (Rajasthan)	1 608	1:11.5
India (Tamil Nadu)	---	---
Indonesia	13 604	1:10.1
Japan	17 481	1:4.1
Kiribati	33	1:4
Korea	13 332	1:3.5
Macao (China)	415	1:2.3
Malaysia	13 089	1:2.9
Mongolia	2 044	1:3.8
New Zealand	2 754	1:3.2
Philippine	1177	1:30.7
Singapore	1 653	1:8
Solomon Islands	277	1:1
Sri Lanka	4 717	1:5.2
Thailand	10101	1:22.7
Tonga	64	1:2.4
Vanuatu	80	1:2.8
Vietnam	---	---

* 'Custodial Staff' refers to full time (or equivalent) custodial staff working in prisons/correctional institutions who are involved in direct custodial inmate supervision (i.e., excluding other supporting staff like medical doctors, psychologists, teachers, clerical staff, civilian personal, etc.).

Correctional Statistics for Asia and Pacific 2011

Table 3(a): Institutional Staff* to Prisoner Ratio, mid 2011

Country/Area	Total institutional staff	Institutional staff to prisoner ratio
Australia (Northern Territory)	426	1:2.9
Australia (Western Australia)	1790	1:2.6
Brunei Darussalam	452	1:0.9
Cambodia	2 211	1:6.9
Canada	13 486	1:1.1
Fiji	557	1:2.2
Hong Kong (China)	5 710	1:1.7
India (Rajasthan)	2 087	1:8.9
India (Tamil Nadu)	---	---
Indonesia	14 608	1:9.4
Japan	19 380	1:3.7
Kiribati	---	---
Korea	15 030	1:3.1
Macao (China)	624	1:1.5
Malaysia	13 089	1:2.9
Mongolia	2 683	1:2.9
New Zealand	3 648	1:2.4
Philippine	2 362	1:15.3
Singapore	1 760	1:7.5
Solomon Islands	341	1:0.8
Sri Lanka	4 837	1:5.1
Thailand	10 101	1:22.7
Tonga	112	1:1.4
Vanuatu	84	1:2.7
Vietnam	15 664	1:7.2

* 'Institutional Staff' refers to full time (or equivalent) staff working in prisons/correctional institutions, including all categories or staff in prisons/correctional institutions, but excluding those working in headquarters and training colleges.

Correctional Statistics for Asia and Pacific 2011

Table 2: Unconvicted Remandees, mid 2011

Country/Area	Unconvicted remandees	% of remandees	Remand rate (per 100 000 population)
Australia (Northern Territory)	297	23.5	131.4
Australia (Western Australia)	831	17.9	35.8
Brunei Darussalam	39	9.1	9.6
Cambodia	5 728	37.6	40.7
Canada	---	---	---
Fiji	321	25.9	36.9
Hong Kong (China)	1 550	16.0	21.8
India (Rajasthan)	12 118	65.5	17.7
India (Tamil Nadu)	---	---	---
Indonesia	51 624	37.6	22.0
Japan	7 881	11.0	6.2
Kiribati	17	12.8	16.5
Korea	15 090	32.4	30.8
Macao (China)	197	20.9	35.3
Malaysia	8 698	22.4	30.7
Mongolia	1 428	18.2	51.8
New Zealand	1 867	21.4	42.4
Philippine	---	---	---
Singapore	2 553	19.3	50.3
Solomon Islands	115	41.2	22.3
Sri Lanka	13 057	52.8	63.2
Thailand	59 864	26.1	86.1
Tonga	1	0.6	1.0
Vanuatu	66	29.5	27.2
Vietnam	---	---	---

Imprisonment Rate (per 100 000 population) Asia and the Pacific, mid 2011

